

CATALOGUE 2022

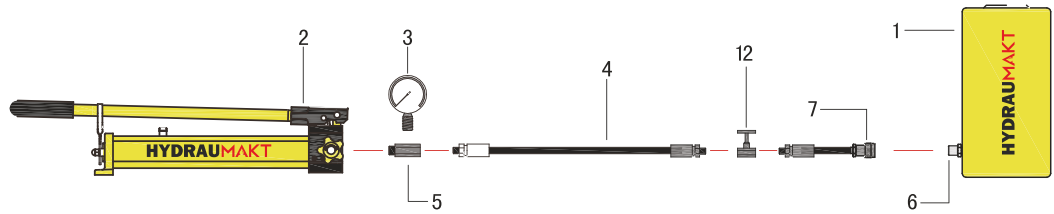


HYDRAUMAKT

High Pressure Hydraulic Tools & Equipments

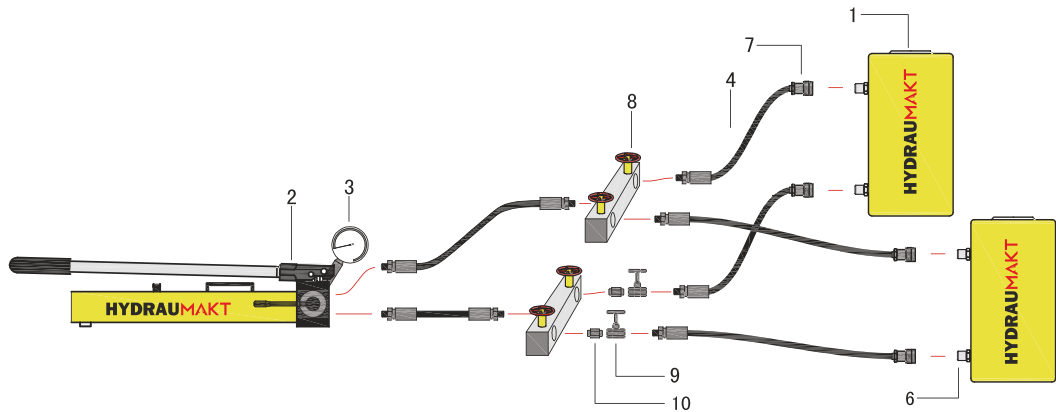
www.hydraumakt.com

HYDRAULIC CYLINDER SET-UPS



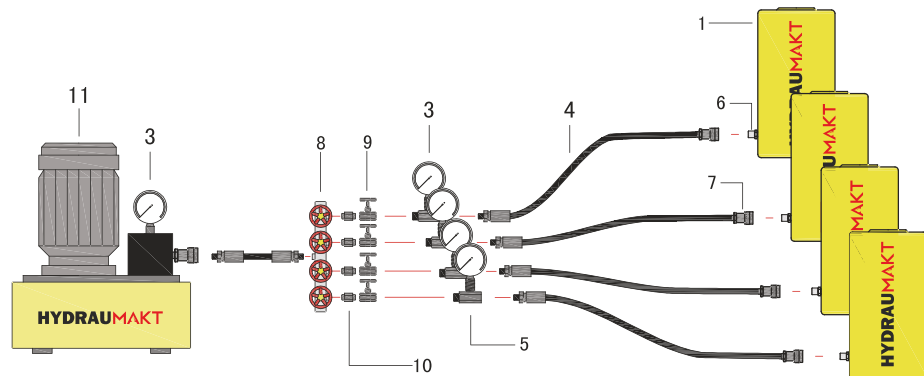
Set-up one: One-way hand pump+Hose+Single acting hydraulic cylinder

It is the basic system set-up. The oil reservoir of pump must be larger than the oil capacity of cylinder, so as to offer full cylinder stroke.



Set-up two: Two-way hand pump + Two manifolds + Six hoses + Two double acting hydraulic cylinders

With 2- or more-port manifold, the system allows simultaneous lift and descent of several double acting cylinders. Throttle valve installed on the outlet port of manifold regulates the flow of hydraulic fluid to or from the cylinders, so as to control the lift and descent of each cylinder and maintain horizontal movement of load.



Set-up Three: One-way electric pump + Manifold + Five hoses + Four single acting cylinder

With 4- or more- port manifold, the system allow simultaneous lift of several single acting cylinders. Throttle valve regulates the flow of hydraulic fluid to or from the cylinders. One- way valve allows safety holding of load in lifting applications.

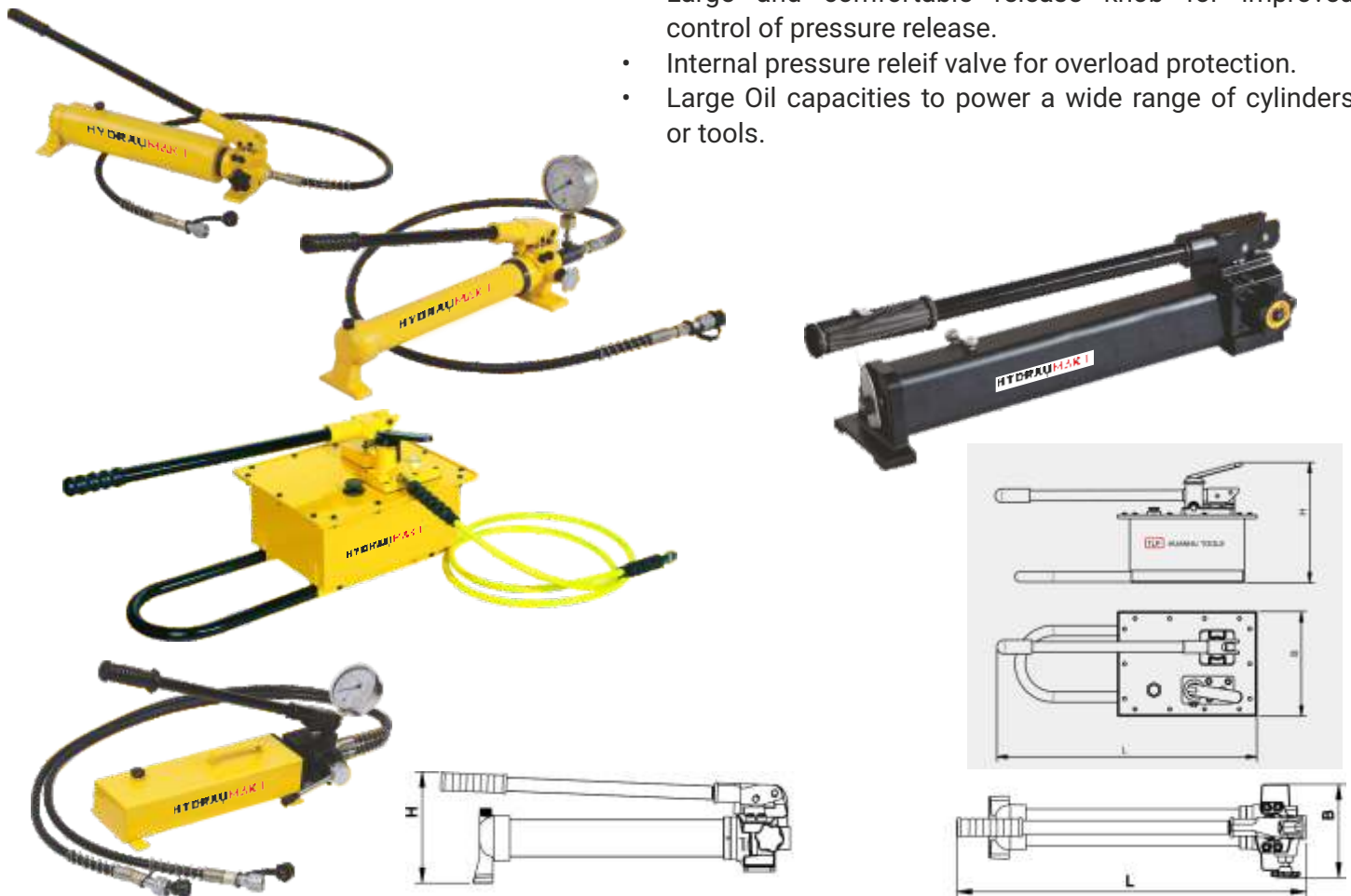
- 1. Cylinder
- 2. Hand pump
- 3. Pressure gauge
- 4. Hose
- 5. Gauge adaptor
- 6. Female coupler

- 7. Male coupler
- 8. Manifold
- 9. Throttle valve
- 10. Connector
- 11. Electric pump
- 12. Safety holding valve

HPH Series

HAND OPERATED HYDRAULIC PUMPS

Working pressure 700 Bar



Features

- Lightweight, robust, durable and compact
- Two speed hydraulic system for fast and easy operation.
- Reduced handle effort and ergonomic grip for less operator fatigue.
- Handle lock and lightweight construction for easy carrying
- Large and comfortable release knob for improved control of pressure release.
- Internal pressure relief valve for overload protection.
- Large Oil capacities to power a wide range of cylinders or tools.

Model	Working Pressure (Bar)		Oil Displacement per stroke (cm ³)		Reservoir (cm ³)		Dimensions (mm)			MOC Type	Weight Kg
	Low	High	Low	High	Oil	Usable	L	B	H		
HPH-1000A	20	700	13	2.3	1300	1000	550	110	125	Aluminium	6.4
HPH-2000A	20	700	13	2.3	2500	2000	550	130	140	Aluminium	8.9
HPH-700	20	700	13	2.3	1000	700	600	120	200	Steel	10.6
HPH-2700	20	700	13	2.3	3200	2700	715	120	200	Steel	16.8
HPH-7000	20	700	126.2	4.75	7500	7000	740	310	330	Steel	26.5
HPH-350FP	20	700	13	2.3	600	350	445	145	250	Steel/Foot	12.8
HPH-400FP	20	700	13	2.3	600	400	550	150	300	Steel/Foot	13.9
TWO WAY PUMPS FOR DOUBLE -ACTING APPLICATIONS											
HPH-7000D	20	700	126.2	4.75	7500	7000	740	310	330	Double Acting	27.5
HPH-700D	20	700	13	2.3	3500	3000	710	150	275	Double Acting	18.6

HEP Series

Features

- Robust and durable Construction
- Roll Frame for easy carrying and Protection
- All the Pumps are Equipped with Pressure Gauge, which Minimizes the risk of overloading and ensure long, dependable service.
- Internal Pressure relief valve Prevents Overloading
- Long, Trouble free life in the most demanding work environments.
- Two Speed Operation reduces cycle time for improved productivity
- Option of having power pack in Motor Ratings of 1.5Kw and 2.2 KW .

ELECTRIC POWERED HYDRAULIC PUMPS



Model No.	Power Rating (Kw)	Working pressure (Bar)		Flow rate (L/min)		Usable Oil Capacity (Liter)	Dimensions (mm)			Weight (Kg)	Type of Valve	Suited for
		Low Pressure Stage	High Pressure Stage	Low Pressure Stage	High Pressure Stage		L	B	H			
HEP-435-S	0.35	20	700	5	0.5	4	390	235	295	17.5	Advance-Hold-Retract/ Solenoid	Single acting
HEP-275-S	0.75	20	700	4	0.6	2	235	160	405	18.7	Advance-Hold-Retract/ Solenoid	Single acting
HEP-212-S	1.2	20	700	5	0.7	2	210	145	330	11	Advance-Hold-Retract/ Solenoid	Single acting
HEP-875	0.75	20	700	5	0.7	8	305	245	510	23	Advance-Return/Manual	Single acting
HEP -875-S	0.75	20	700	5	0.7	8	325	255	565	26	Advance-Return/Solenoid	Single acting
HEP-875-DM	0.75	20	700	5	0.7	8	305	245	510	26	Advance-Hold-Return/Manual	Double acting
HEP-875-DS	0.75	20	700	5	0.7	8	325	255	450	23	Advance-Hold-Return/Solenoid	Double acting
HEP-353	3.0	20	700	10	3.0	35	455	355	660	64.4	Advance-Hold-Return/Manual	Single acting
HEP-353-D	3.0	20	700	10	2.5	35	455	355	660	62.4	Advance-Hold-Return/Manual	Double acting
HEP-353-DS	3.0	20	700	10	3.0	35	455	355	660	64.4	Advance-Hold-Return/Solenoid	Double acting

HAP Series

AIR POWERED HYDRAULIC PUMPS



Features

- Rugged construction - built for long life and easy service.
- Controls the input air and valve by foot pedal, easier to operate than a hand pump.
- Operates in all positions for increased versatility in use.
- Ideal for powering single -acting cylinders and portable hydraulic tools.
- Air Powered hydraulic pumps are used where air is the preferred energy source or where electricity is not available. Ideal for use in petrochemical, mines or other inflammable or explosive environments.
- Output oil pressure 700 Bar required to operate on 8 bar (120 psi) shop air

Model	Output Pressure (Bar/Psi)	Air Supply Required (Bar/Psi)	Usable oil capacity (cm3)	Weight (kg)
HAP-700	700/10000	8/120	690	8.9
HAP-1700	700/10000	8/120	1700	8.1

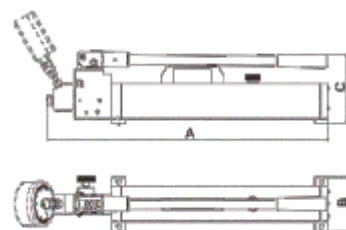
HUP Series

HAND PUMP ULTRA HIGH PRESSURE - 1600 BAR & 2800 BAR



Features

- Equipped with a Pressure regulating valve, to adjust the output Pressure .
- Aluminum alloy corrosion resistance, high strength, light weight, impact resistance, adapt to a variety of harsh environment.
- Comes with Built-in high and low pressure switching valve, low pressure high flow rate output



MODEL NO.	Pressure Bar (Low/Hi)	Per Stroke (Low/Hi) (mL)	Full Tank Oil (L)	Available Oil (L)	Size (mm) L x B x H	Oil Interface	Gauge Interface	Weight (Kg)
HUP-16	1.5/1600	32/2.5	1.67	1.44	636/120/170	1/4" BSP	1/2" BSP	6.5
HUP-28	2.0/2800	32/0.9	2.26	1.98	636/120/170	1/4" BSP	1/2" BSP	8.5



Scan QR to
download
this catalogue

Our Quality Policy



Each product is tested to the most excruciating standards.

Only this way we can ensure the un-interrupted performance of our products. Our High Quality product matched with the unbeatable enables us to cater to the requirements of the markets. We recognize that consistent satisfaction of customer needs is essential to business survival & we diligently work towards securing a long term partnership.



Warranty Statement

Each HYDRAUMAKT Product with the exception mentioned below are warranted against defects in workmanship and materials for the period of one year from the date of delivery to the buyer. The Warranty does not cover any product or part which is abused, heated, damaged, broken, worn out or otherwise altered or used in a manner inconsistent with the instructions or used for a purpose otherwise not intended for.

Electric motors , circuits , batteries , blades, cutters etc. supplied with Hydraumakt tools are not covered under this warranty .

For this warranty to take effect the costumer has to return the defective product to the Hydraumakt or its authorized Distributor on Freight Paid basis. If the Product is found to be defective by Hydraumakt as per the conditions stated above , the Hydraumakt shall repair or replace the product on its discretion and the same shall be returned on Freight Pre Paid basis.

The Warranty is limited to the Hydraumakt product and not extended beyond their product or any incidental ancillary.

HYDRAUMAKT

HYDRAUMAKT HYDRAULICS INC

16192 Coastal Highway
Lewes, Delaware 19958 USA
Email : info@hydraumakt.com

Scan & Save
our contact
in your mobile



Authorised Indian Distributor :
Industrial Marketing & Services

509, Ansal Majestic Tower, G Block
Community Center, Vikaspuri,
New Delhi -110018

T: +91 11 28543331, 41543331
E: info@imshydraulic.com